

APPLICATIONS

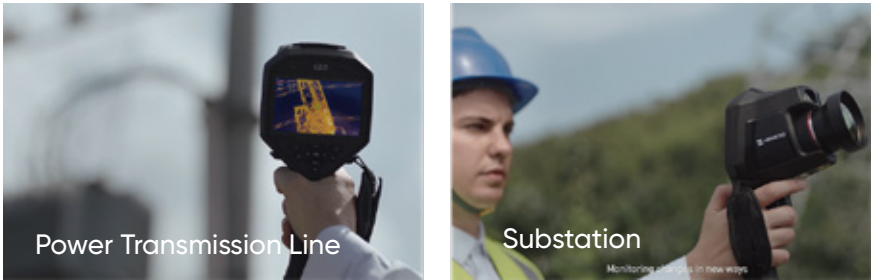
UTILITY INSPECTION

See Clearly Hotspot with Precision

Thermal imaging can identify areas where electrical connections are in the process of overheating and could potentially lead to a fire hazard. Overheating of electrical or mechanical components can cause them to fail, disrupting occupancy or operations and resulting to expensive repairs.

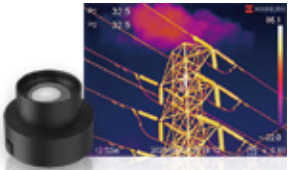
Benefit

Keep your power installations working without failures, perform preventive maintenance



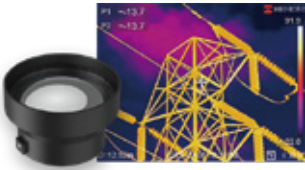
Suitable for All-day Work

Interchangeable Lens 0.5X, 2X, 3.3X are available for choices. Different tele converter gives different Field Of View, which gives more choices when facing different scenarios.



Wide Angle 0.5X HM-G605-LENS

Lens	13.6 mm
FOV	G60: 48.2° (H) x 38.5° (V) G40: 35.4° (H) x 26.2° (V)
Accuracy	Max (±3°C/5.4°F, ±3%)



Telephoto 2X HM-G620-LENS

Lens	50 mm
FOV	G60: 12.5° (H) x 10.0° (V) G40: 9.3° (H) x 7° (V)
Accuracy	Max (±3°C/5.4°F, ±3%)

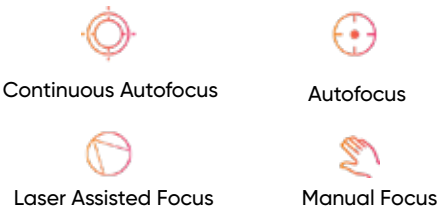


Telephoto 3.3X HM-G605-LENS

Lens	82 mm
FOV	G60: 7.6° (H) x 6.1° (V) G40: 5.7° (H) x 4.3° (V)
Accuracy	Max (±3°C/5.4°F, ±3%)

Various Focus Modes

Support 4 types of focus modes to reach more clear images and ensures more accurate temperature measurements.



HIKMICRO Analyzer Software

Included software offers flexible ways (points, lines, rectangles, circles, polygons) to analyze thermographic info of captured pictures, and generate reports.




Embedded Laser Distance Meter

The integrated laser distance meter measures accurate distance from afar, more convenient in setting parameter and generating report.

Recommended Solutions



G Series

Series	Phone module	Entry-level	Basic		Master		Genius	
Model	Mini1	E1L	B1L	B20	M10	M30	G40	G60
Image								
IR Resolution	160 x 120	160 x 120	160 x 120	256 x 192	160 x 120	384 x 288	480 x 360	640 x 480
Temperature Range	-20 °C to 350 °C (-4°F to 662°F)	-20 °C to 550 °C (-4°F to 1022°F)	-20 °C to 550 °C (-4°F to 1022°F)	-20 °C to 550 °C (-4°F to 1022°F)	-20 °C to 550 °C (-4°F to 1022°F)		-20 °C to 650 °C (-4°F to 1022°F)	
Optical Camera	×	×	×	Max 2 MP	Max 8 MP		Max 8 MP	
NETD	< 40 mK	< 40 mK	< 40 m		< 40 mK	< 35 mK	< 35 mK	
Image Frequency	25Hz	25Hz	25Hz		25Hz		50Hz	
Display	Phone Screen	2.4" LCD Screen	3.2" LCD Screen		3.2" LCD Screen		4.3" LCD Touch Screen	
Color Alarm (Isotherm)	×	×	√		√		√	
Focus	Fixed	Fixed	Fixed		Manual		Continuous Autofocus/Autofocus/Manual Focus/Laser Assisted Focus	
Connect with App	√	×	√		√		√	
Video	√	×	×		√		√	
Laser Distance Meter	×	×	×		×		√	
1-Tap Level & Span	×	×	×		√		√	
Interchangeable Lenses	×	×	×		×		√	
Muti-language	√							
Warranty	2 years for battery, 3 years for full product and 10 years for detector							

ABOUT HIKMICRO

HIKMICRO is a leading provider of thermal imaging equipment and solutions. Specializing in SoC and MEMS design, development, and manufacturing, the company offers thermal detectors, cores, modules, cameras and total solutions to the global market, serving customers in more than 100 countries and regions.

HIKMICRO places a high value on research and development, empowering its continual progress in thermal technology. The company earned ISO9001 certification in 2018, demonstrating its quality-first philosophy from the very start. Through continuous innovation, HIKMICRO's products and solutions constantly meet the diverse needs of individual, commercial, industrial, and utility customers around the world.

HIKMICRO will continue to provide professional software and hardware products for its expanding list of business partners, working together to build a safer, smarter, and more efficient world.



© Hangzhou HIKMICRO Sensing Technology Co., Ltd.
Building A1, No.299, Qiushi Road, Tonglu Economic Development Zone, Tonglu County, Hangzhou, Zhejiang

HIKMICRO Thermography

info@hikmicrotech.com

hikmicro_thermography

https://hikmicrotech.com/en

HIKMICRO Thermography

HIKMICRO



Multiple Interchangeable Lenses

Handheld Thermography Application Guide



Phone Module Series
Mini1

Entry-level Series
E1L

Basic Series
B1L / B20

Master Series
M10 / M30

Genius Series
G40 / G60

APPLICATIONS

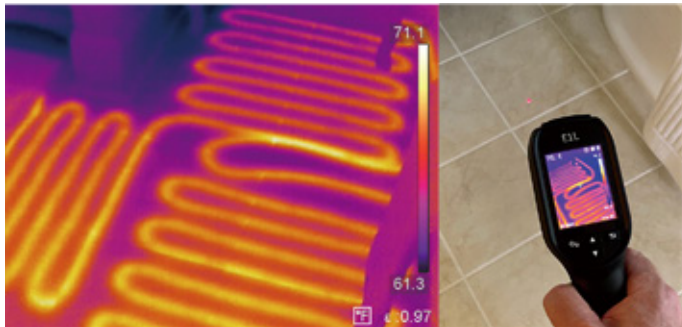
HVAC

Locate Faults in Underfloor Heating and Check Air Conditioning

Radiant flooring is a great heating option because it's consistent, comfortable, and relatively cost-effective. The downside is that the source of heating — tubing filled with liquid — is hidden behind or under finished surfaces. Any leaks or energy loss are hard to pinpoint without the use of thermal imaging.

Benefit

Thermal cameras allow home inspectors to examine the system without disturbing finishes.



Underfloor heating



Air conditioner

APPLICATIONS

PREDICTIVE MAINTENANCE

Identify Hot, Check Installed Load, and Phase Comparison

Damaged wires, electrical components and connections would cause a variety of problems. Faulty wiring or components aging may result in electronics damage due to overload. Electric sparks may cause large-scale fires, which can cause property damage and even civilian injuries. By diagnosing the issue early on, technicians can conduct repairs before a total failure occurs.

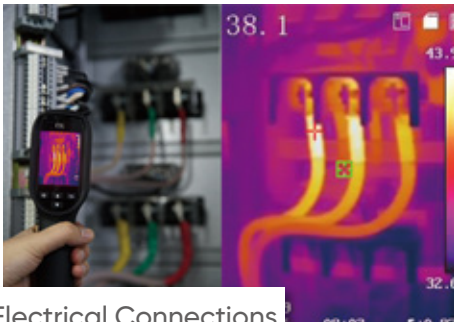
Benefit

Save time and money, making routine inspections identifying hidden problems in electrical and mechanical installations.



Panels/Cabinet

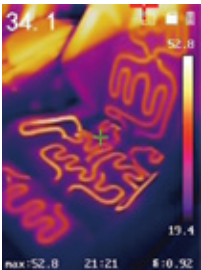
— circuit breakers, contactors, and power supplies



Electrical Connections

— bars, fuses, and wires

Full Screen Accurate Thermal Imaging



High Image Quality

A highly sensitive HIKMICRO VOx detector (NETD < 40 mK) provides a distinct thermal vision of the target.



High Image Frequency

25 Hz delivers smooth video and measurements while panning across scenes or viewing moving targets..



Efficient & Quick Temperature Measurement

Full screen measurement in virtue of different presets checks everywhere at the very first sight. Measurement Presets: Center Spot, Hot Spot, Cold Spot, Off. $\pm 2^{\circ}\text{C}$ ($\pm 3.6^{\circ}\text{F}$) or $\pm 2\%$ of the reading of temperature measurement accuracy guaranteed.

Powerful Software via Wi-Fi



HIKMICRO Viewer App

It is a powerful free App that realizes real-time screen sharing and remote control.



Reliability



Suitable for All-day Work

Long battery life up to 8 hours, rugged ingress protection and 2m drop test approved.

Recommended Solutions



B20
B1L
E1L
Mini1

APPLICATIONS

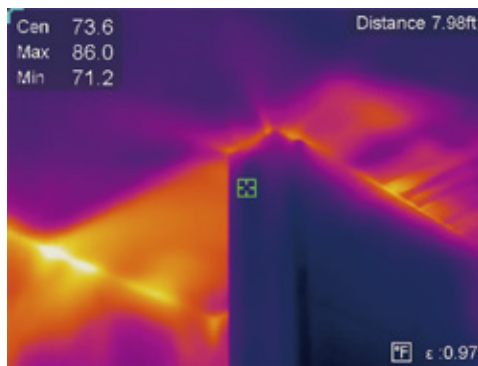
BUILDING INSPECTION

Check Building Envelope, Insulation, and Air Leaks

Energy efficiency depends heavily on the integrity of a building's envelope, including insulation, windows, and doors. Thermal imaging can help identify where climate-controlled air is escaping or where unconditioned air enters a building unintentionally.

Benefit

Thermography cameras make important diagnoses in facilities, allowing to reduce building insurance and improve its environment.



Building insulation



Moldy roof

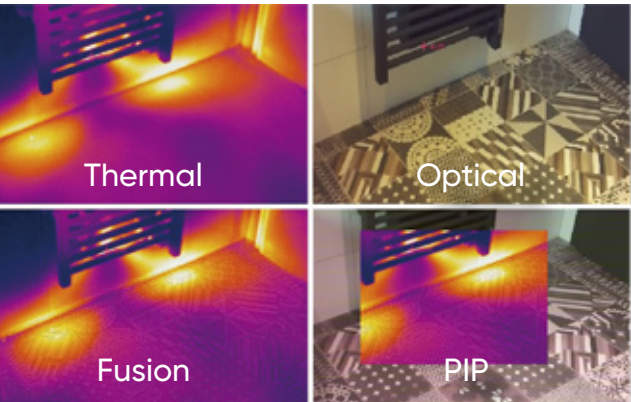
Recommended Solutions



M Series

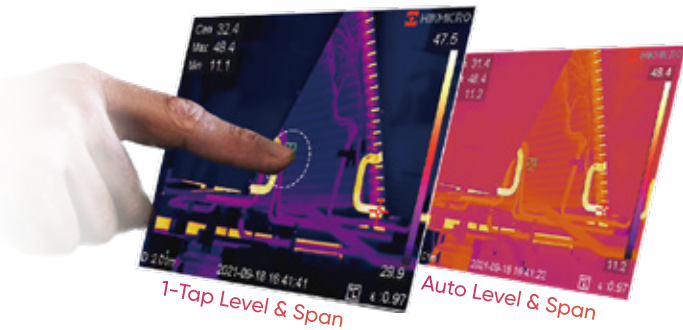
Multiple Image Modes

Thermal, Fusion, PIP and Optical modes to suit your preferred view.



1-Tap Level & Span

Allows to focus on the area of the image you are interested in by narrowing the span with 1-Tap of the screen.



Color Alarm

Color highlight the area above/ below/ in/ out of the range from the threshold.

Manual Focus

Adjusting the manual focus ring allows to see objects clearly at different distances.